

AutoSave for System Platform

Change management for AVEVA (formerly Wonderware) System Platform objects, graphics, templates, instances, and more.

AutoSave for System Platform (A4SP) enables users to:



Remove undesired changes

The key to “undoing” an undesirable change is to maintain a history of all revisions. With A4SP users can access and restore prior copies of objects, which is essential in restoring plant applications quickly and correctly.



Detect object associations and version differences

A4SP provides the ability to see how one object is associated with others and to compare any two versions of an object with detailed identification of changes.



Validate changes between production and Dev/QA Galaxies

Identify every update between a production galaxy and an updated version preparing for release. This provides assurance that only known changes are deployed in production.



Restore object changes following a Galaxy restoration

If a Galaxy becomes corrupted and must be restored from a backup, A4SP can provide object updates that occurred between the backup and the event.

Unprecedented Flexibility

When paired with the System Platform 2020 product, the latest version of A4SP runs without the need for an AVEVA Development Studio (DevStudio) environment running on the GR node and no longer requires an additional GRAccess license to run.

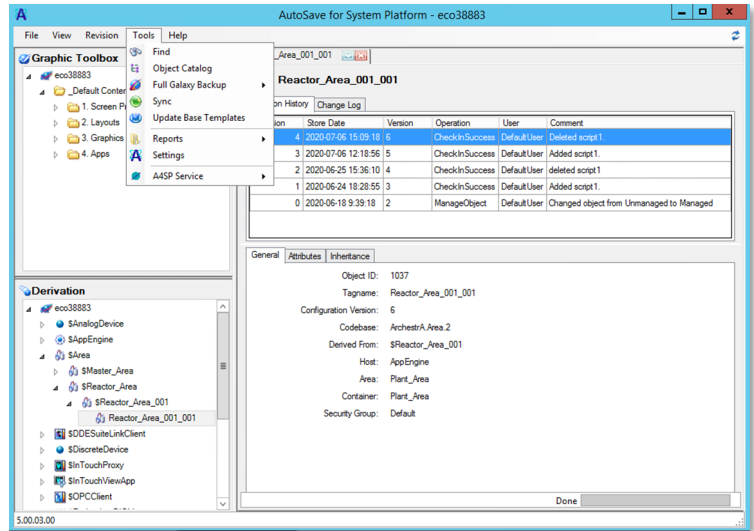
- Environments where the DevStudio is on a laptop or remote node, are supported
- Users and System Integrators are better protected when development is outsourced.
- Users can track changes and Integrators have complete revision history on any runtime node.



The only product endorsed by AVEVA to provide change management support for AVEVA System Platform

Main Features

- Monitors incoming activity on the Galaxy Repository (GR) system while capturing changes as they are made.
- Operations are a single-click away to provide users with the ability to compare or restore to a prior revision of a graphical object, template or instance.
- Actively manages the GR to track changes for multiple users, simultaneously.
- Full Galaxy backups can be scheduled or performed through the A4SP client. Each backup is stored as a revision in the AutoSave archive.
- Intuitive client interface provides access to historical data archived in the AutoSave Server, including graphical objects, templates, instances, client controls and managed InTouch applications.
- Additional tabs of information, such as “Inheritance” and “Derivation”, provide additional data that is not found in the IDE.



When you need to use AutoSave for System Platform

